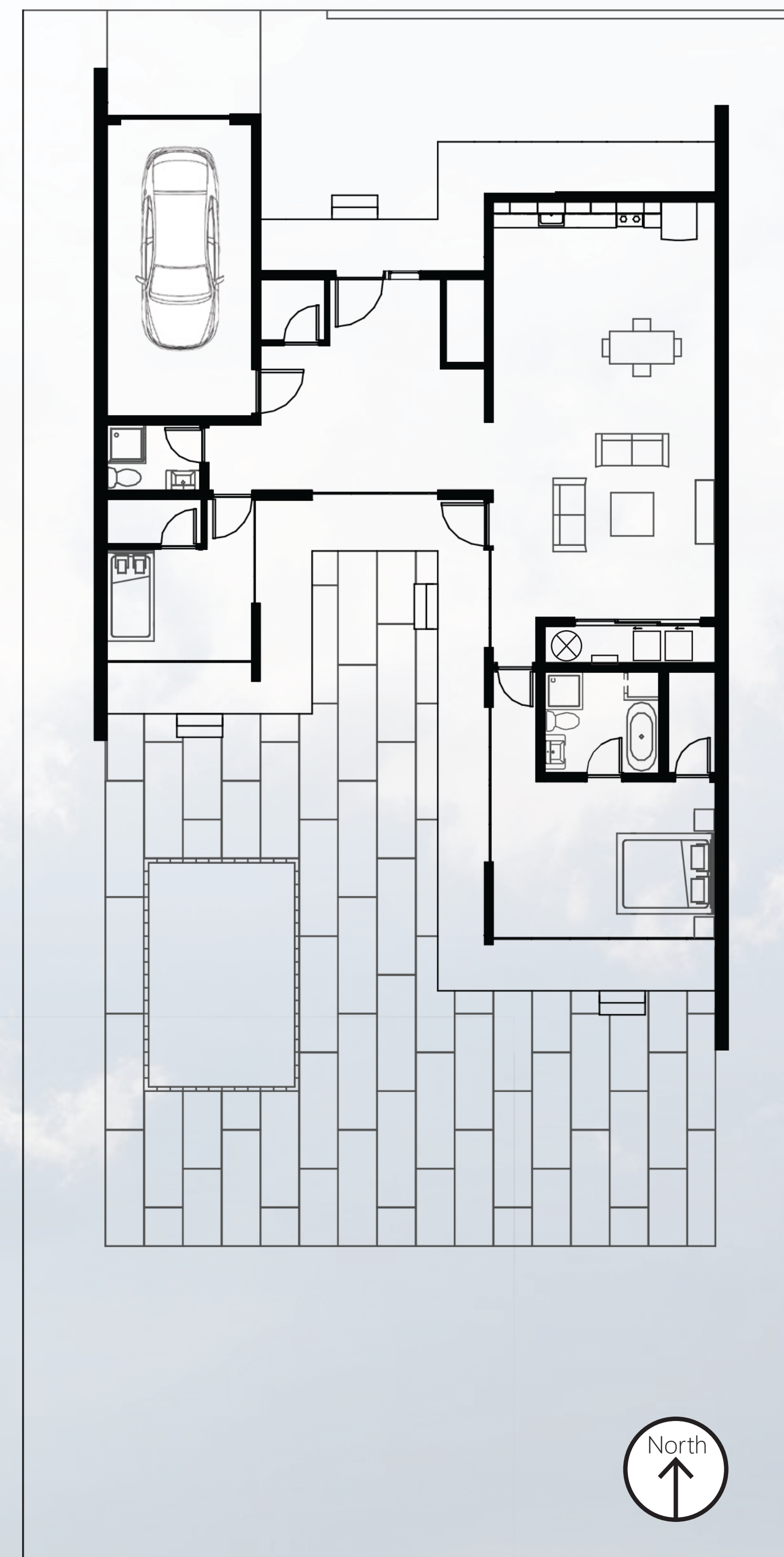


EnviroHome | 8918 | Southeast

Clearwater, Florida 33757

EnviroHome Competition
Jacob Paul Blankenship
Hannah Mullins
May 10 - 13, 2018

Thinking bright for the future in this EnviroHome. This proposal was approached with the idea of hurricane and tropical storm damage reduction at the center of the design problem. To combat these issues the house is oriented on a North/South axis with 12" Envirocast walls on the West and East sides that have no windows, these walls act as wind barriers that are meant to withstand and take the brunt of heavy winds without the possibility of destroyed windows. The windows are located on the interior of the homes perimeter, shielded from the winds. In addition the house is also lifted 4" off the ground on an 8" slab of concrete to combat small flooding during the rainy season.



South Section

Floor Plan

